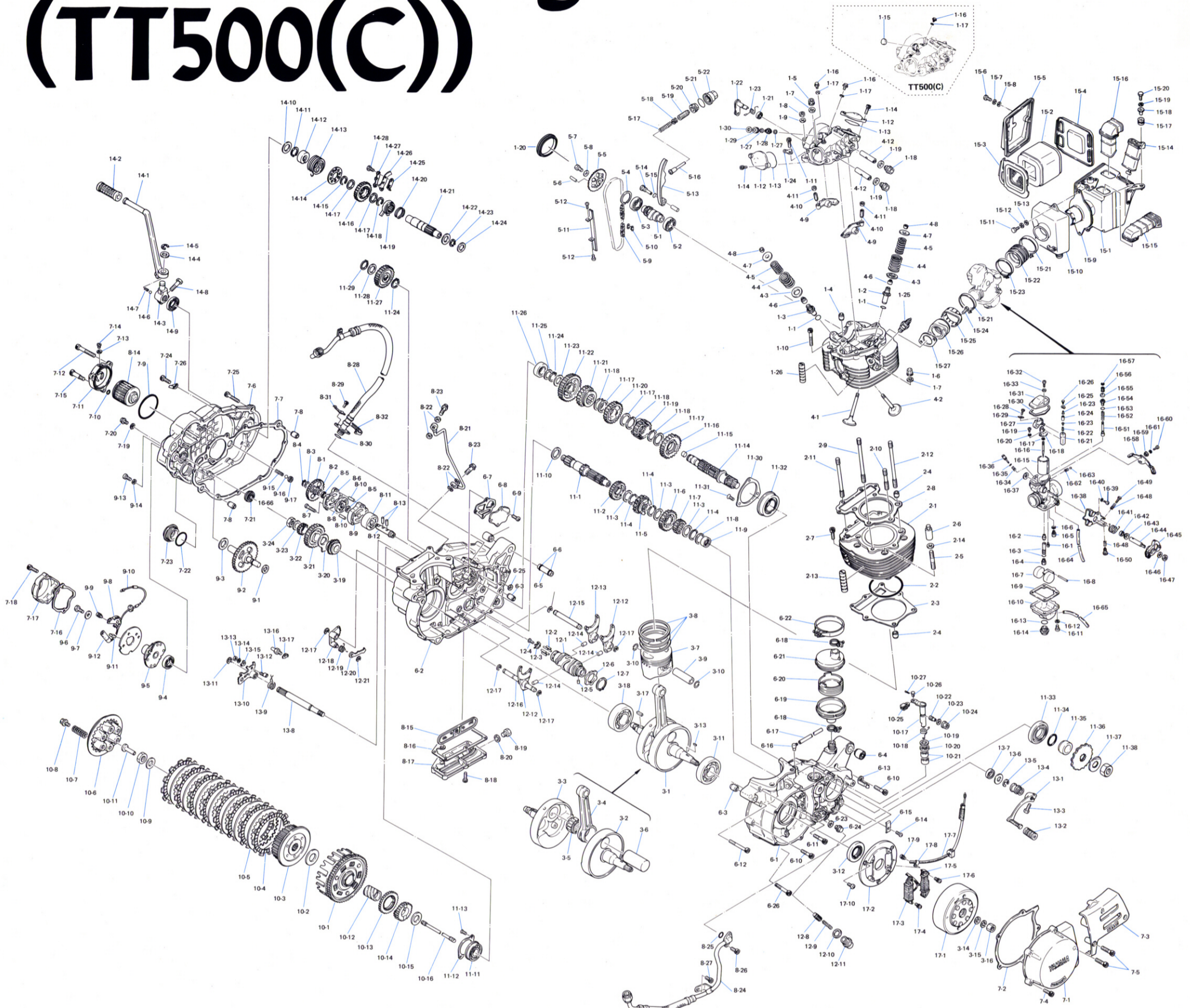


XT500(C) Engine Illustration (TT500(C))



CYLINDER HEAD - CYLINDER HEAD COVER		CRANK - PISTON		CRANKCASE		OIL PUMP - OIL CLEANER		CLUTCH		SHIFTER 1		KICK STARTER		CARBURETOR			
Ref. No.	Description	QTY	Ref. No.	Description	QTY	Ref. No.	Description	QTY	Ref. No.	Description	QTY	Ref. No.	Description	QTY	Ref. No.	Description	QTY
1-1	O RING (1.5-13.8)	2	3-1	CRANK	1	8-1	Pump driven gear	1	10-1	PRIMARY DRIVEN GEAR COMP. (771)	1	14-1	Kick crank	1	18-1	Pin (ø 18)	1
1-2	Inlet valve guide (1st O.S.)	1	3-2	CRANK 1	1	8-2	Plate washer (164-1857-00)	1	10-2	Thrust plate 2	1	14-2	Kick lever cover	1	18-2	Main needle (O-2)	1
1-3	Exhaust valve guide	1	3-3	CRANK 2	1	8-3	Plate washer	1	10-3	Clutch cone	1	14-3	Kick crank base	1	18-3	Needle air pipe with O ring	1
1-4	Dowel pin	2	3-4	Connecting rod	1	8-4	CIRCLIP (S-10)	1	10-4	Friction plate	8	14-4	Plate washer (278-15813-00)	1	18-4	Main jet	U.R.1
1-5	NUT	4	3-5	BEARING	1	8-5	OIL SEAL (S-11-15-S)	2	10-5	Clutch plate	7	14-5	Dowel pin (4.8)	1	18-5	VALVE SEAT ASSY	1
1-6	NUT	1	3-6	CRANK PIN	1	8-6	Pump cover	1	10-6	Pressure plate	1	14-6	BALL (1732) nut	1	18-6	Valve seat washer	1
1-7	Plate washer (371-11175-00)	5	3-7	PISTON	1	8-7	GASKET	1	10-7	Compression spring	6	14-7	CIRCLIP (S-30)	1	18-7	FLUID	1
1-8	NUT	2	3-8	PISTON RING SET	1	8-8	ROTOR 1 ASSY	1	10-8	Cam stopper	1	14-8	BOLT	1	18-8	Float pin	1
1-9	Plate washer	2	3-9	PISTON PIN	1	8-9	Roller housing	1	10-9	Roller housing	1	14-9	OIL SEAL (S-25.37)	1	18-9	Float pin	1
1-10	Allen head bolt	3	3-10	PISTON PIN COU. (241-11634-00)	2	8-10	Roller housing	1	10-10	Compression spring (278-18557-00)	1	14-10	Plate washer (131-15653-00)	1	18-10	Needle check valve	1
1-11	Allen head bolt	3	3-11	BEARING (88306)	4	8-11	ROTOR 2 ASSY	1	10-11	Clutch lock 1	1	14-11	SCREW (278-18577-00)	1	18-11	Plate washer	4
1-12	Cylinder head side cover	2	3-12	OIL SEAL (S-30-80-S)	1	8-12	Pump shaft	1	10-12	Spacer	2	14-12	SPACER	1	18-12	Spring washer	1
1-13	O RING (S-14.8)	2	3-13	WOODRUFF KEY	1	8-13	Roller housing	1	10-13	Shift lock 1	1	14-13	Tension spring	1	18-13	O RING	1
1-14	Allen head bolt	4	3-14	Plate washer	1	8-14	OIL CLEANER ASSY	1	10-14	SPACER	1	14-14	Pin (278-18555-00)	3	18-14	Spring cover	1
1-15	PLUG (17500(C))	1	3-15	Spring washer	1	8-15	Oil strainer	1	10-15	Thrust plate 1	1	14-15	Pin (278-18555-00)	3	18-15	Throttle valve (C.A. 4-S)	1
1-16	BOLT	2	3-16	NUT (214-11555-01)	1	8-16	Strainer gasket	1	10-16	Push out	1	14-16	Pin (278-18555-00)	3	18-16	NEEDLE O-RING	1
1-17	GASKET (256-11396-00)	2	3-17	BEARING (88307)	1	8-17	HOSE (296-24317-00 4.2-4.3S)	1	10-17	Push lever axle	1	14-17	Pin (278-18555-00)	3	18-17	Needle clip	1
1-18	PLUG	2	3-18	BEARING (88307)	1	8-18	CLAMP	2	10-18	Tension spring	1	14-18	Pin (278-18555-00)	3	18-18	Throttle valve bracket	1
1-19	GASKET (256-11387-00)	2	3-19	Cam chain drive sprocket (177)	1	8-19	BEATHER 2	1	10-19	Roller housing	1	14-19	Roller housing	1	18-19	Roller housing	1
1-20	PLUG	1	3-20	Cam chain sprocket plate	1	8-20	OIL SEALER	1	10-20	Adjusting screw	1	14-20	Compression spring (263-18723-00)	1	18-20	Spring washer	2
1-21	OIL SEAL (S-12-17.2-S)	1	3-21	Primary drive gear (207)	1	8-21	BEATHER 1	1	10-21	Roller housing	1	14-21	Roller housing	1	18-21	CONNECTOR	1
1-22	Decompression cam	1	3-22	Breaker shaft drive gear (211)	1	8-22	BEATHER 1	1	10-22	Roller housing	1	14-22	Roller housing	1	18-22	SPRING	1
1-23	Tension spring	1	3-23	WASHER	1	8-23	GASKET (261-18558-00)	1	10-23	Roller housing	1	14-23	CIRCLIP (S-19)	1	18-23	Pin (2)	2
1-24	Decompression bracket	1	3-24	NUT	1	8-24	PLUG (267-18558-00)	1	10-24	Roller housing	1	14-24	Plate washer (168-17116-00)	1	18-24	PIN (2)	1
1-25	Spark plug (BP-7FS or N-7V)	1	3-25	CLAMP	1	8-25	O RING (1.5-8-S)	1	10-25	Roller housing	1	14-25	Roller housing	1	18-25	WASHER	1
1-26	ABSORBENT	2	3-26	CLAMP	1	8-26	O RING (1.5-8-S)	1	10-26	Roller housing	1	14-26	Roller housing	1	18-26	CONNECTOR fitting bolt	1
1-27	Plate washer	2	3-27	CLAMP	1	8-27	Allen head bolt	1	10-27	Roller housing	1	14-27	Roller housing	1	18-27	Throttle valve lever	1
1-28	Drive gear	1	3-28	CLAMP	1	8-28	O RING (1.5-8-S)	1	10-28	Roller housing	1	14-28	Roller housing	1	18-28	Throttle valve lever	1
1-29	Seal	1	3-29	CLAMP	1	8-29	Allen head bolt	1	10-29	Roller housing	1	14-29	Roller housing	1	18-29	Throttle valve lever	1
1-30	Oil seal	1	3-30	CLAMP	1	8-30	O RING (1.5-14-S)	1	10-30	Roller housing	1	14-30	Roller housing	1	18-30	GASKET	1
			3-31	CLAMP	1	8-31	CLAMP	1	10-31	Roller housing	1	14-31	Roller housing	1	18-31	Wiring chamber top	1
			3-32	CLAMP	1	8-32	BAND	1	10-32	Roller housing	1	14-32	Roller housing	1	18-32	Needle screw	2
			3-33	CLAMP	1	8-33			10-33	Roller housing	1	14-33	Roller housing	1	18-33	Spring washer	2
			3-34	CLAMP	1	8-34			10-34	Roller housing	1	14-34	Roller housing	1	18-34	Air adjusting spring	1
			3-35	CLAMP	1	8-35			10-35	Roller housing	1	14-35	Roller housing	1	18-35	Roller housing	1
			3-36	CLAMP	1	8-36			10-36	Roller housing	1	14-36	Roller housing	1	18-36	Air cleaner element	1
			3-37	CLAMP	1	8-37			10-37	Roller housing	1	14-37	Roller housing	1	18-37	Roller housing	1
			3-38	CLAMP	1	8-38			10-38	Roller housing	1	14-38	Roller housing	1	18-38	Roller housing	1
			3-39	CLAMP	1	8-39			10-39	Roller housing	1	14-39	Roller housing	1	18-39	Roller housing	1
			3-40	CLAMP	1	8-40			10-40	Roller housing	1	14-40	Roller housing	1	18-40	Roller housing	1
			3-41	CLAMP	1	8-41			10-41	Roller housing	1	14-41	Roller housing	1	18-41	Roller housing	1
			3-42	CLAMP	1	8-42			10-42	Roller housing	1	14-42	Roller housing	1	18-42	Roller housing	1
			3-43	CLAMP	1	8-43			10-43	Roller housing	1	14-43	Roller housing	1	18-43	Roller housing	1
			3-44	CLAMP	1	8-44			10-44	Roller housing	1	14-44	Roller housing	1	18-44	Roller housing	1
			3-45	CLAMP	1	8-45			10-45	Roller housing	1	14-45	Roller housing	1	18-45	Roller housing	1
			3-46	CLAMP	1	8-46			10-46	Roller housing	1	14-46	Roller housing	1	18-46	Roller housing	1
			3-47	CLAMP	1	8-47			10-47	Roller housing	1	14-47	Roller housing	1	18-47	Roller housing	1
			3-48	CLAMP	1	8-48			10-48	Roller housing	1	14-48	Roller housing	1	18-48	Roller housing	1
			3-49	CLAMP	1	8-49			10-49	Roller housing	1	14-49	Roller housing	1	18-49	Roller housing	1
			3-50	CLAMP	1	8-50			10-50	Roller housing	1	14-50	Roller housing	1	18-50	Roller housing	1
			3-51	CLAMP	1	8-51			10-51	Roller housing	1	14-51	Roller housing	1	18-51	Roller housing	1
			3-52	CLAMP	1	8-52			10-52	Roller housing	1	14-52	Roller housing	1	18-52	Roller housing	1
			3-53	CLAMP	1	8-53			10-53	Roller housing	1	14-53	Roller housing	1	18-53	Roller housing	1
			3-54	CLAMP	1	8-54			10-54	Roller housing	1	14-54	Roller housing	1	18-54	Roller housing	1
			3-55	CLAMP	1	8-55			10-55	Roller housing	1	14-55	Roller housing	1	18-55	Roller housing	1
			3-56	CLAMP	1	8-56			10-56	Roller housing	1	14-56	Roller housing	1	18-56	Roller housing	1
			3-57	CLAMP	1	8-57			10-57	Roller housing	1	14-57	Roller housing	1	18-57	Roller housing	1
			3-58	CLAMP	1	8-58			10-58	Roller housing	1	14-58	Roller housing	1	18-58	Roller housing	1
			3-59	CLAMP	1	8-59			10-59	Roller housing	1	14-59	Roller housing	1	18-59	Roller housing	1
			3-60	CLAMP	1	8-60			10-60	Roller housing	1	14-60	Roller housing	1	18-60	Roller housing	1
			3-61	CLAMP	1	8-61			10-61	Roller housing	1	14-61	Roller housing	1	18-61	Roller housing	1
			3-62	CLAMP	1	8-62			10-62	Roller housing	1	14-62	Roller housing	1	18-62	Roller housing	1
			3-63	CLAMP	1	8-63			10-63	Roller housing	1	14-63	Roller housing	1	18-63	Roller housing	1
			3-64	CLAMP	1	8-64			10-64	Roller housing	1	14-64	Roller housing	1	18-64	Roller housing	1
			3-65	CLAMP	1	8-65			10-65	Roller housing	1	14-65	Roller housing	1	18-65	Roller housing	1
			3-66	CLAMP	1	8-66			10-66	Roller housing	1	14-66	Roller housing	1	18-66	Roller housing	1
			3-67	CLAMP	1	8-67			10-67	Roller housing	1	14-67	Roller housing	1	18-67	Roller housing	1
			3-68	CLAMP	1	8-68			10-68	Roller housing	1	14-68	Roller housing	1	18-68	Roller housing	1
			3-69	CLAMP	1	8-69			10-69	Roller housing	1	14-69	Roller housing	1	18-69	Roller housing	1
			3-70	CLAMP	1	8-70			10-70	Roller housing	1	14-70	Roller housing	1	18-70	Roller housing	1
			3-71	CLAMP	1	8-71			10-71	Roller housing	1	14-71	Roller housing	1	18-71	Roller housing	1
			3-72	CLAMP	1	8-72			10-72	Roller housing	1	14-72	Roller housing	1	18-72	Roller housing	1
			3-73	CLAMP	1	8-73			10-73	Roller housing	1	14-73	Roller housing	1	18-73	Roller housing	1
			3-74	CLAMP	1	8-74			10-74	Roller housing	1	14-74	Roller housing	1	18-74	Roller housing	1
			3-7														